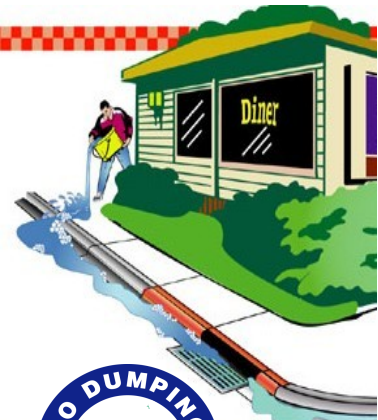
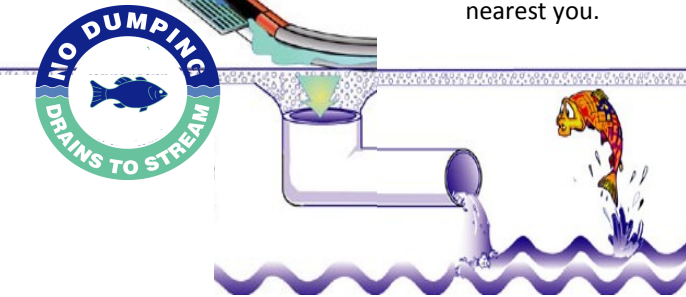


How do household chemicals affect our water?



Did You Know...

When you dispose of paint, cleaners or anything else down a storm drain or street gutter, it goes directly to the stream or lake nearest you.



Soap is for dishes
...Not for fishes



Remember:

Never pour anything down a curb or storm drain that you wouldn't pour in a river.

HCC Collection Facility

601 Compton Dr. Branson, Missouri
*Located at the Branson Recycle Center
Open to all Taney County Residents*

Monday-Saturday: 7:30-1
Thursday: 7:30-6



417-334-5277

Or

417-337-8559

www.bransonmo.gov



Household Chemical Collections: *The Water Connection*

Monday through Saturday 7:30-1
Thursday 7:30-6

601 Compton Dr.
Branson, Missouri
Located at the
Branson Recycle Center
Across from Community Center

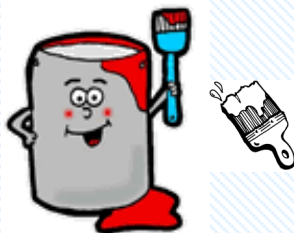
Commonly Accepted Household

Chemical Products:

Acid	Lead
Adhesives and glues	Lighter fluid
Aerosol cans	Lubricating oils
Antifreeze	Mercury, thermometers
Art/hobby paints	Mothballs
Asphalt/roofing tar	Motor oil
Bases (chemicals)	Organic solvents
Batteries, NiCd and NiMH	Oven cleaner
Batteries, rechargeable and lead acid	Paint stripper: alkali-based, solvent-based, water-based
Bleach	Pesticides
Brake fluid	Pet sprays/dips
Capacitors	Photographic chemicals
Caulk	Rodent poison
Car wax/soaps/cleaners	Septic tank cleaners
Disinfectants	Shoe polish/wax
Drain opener	Smoke/Co2 Detectors
Fabric dyes	Soaps/Cleaning products
Fertilizer	Spot removers
Fingernail polish/removers	Swimming pool/spa care
Flea collars	Toilet bowl cleaner
Fluorescent light bulbs	Transmission fluid
Fuel oil	Tub/tile cleaner
Furniture polish/waxes	Unknown substances
Gas cylinders (propane)	Varnish
Gasoline	Windshield wiper fluid
Insecticides	Wood preservatives
Insect repellants	Wood stain
Kerosene	

How do I dispose of paint?

To reduce possible water contamination, dispose of excess paint properly:



Never pour paint or paint residue in a storm drain. It goes to our waterways.



Take oil based paints to Household Chemical Collections (HCC) located inside Branson Recycle Center at 601 Compton Drive.



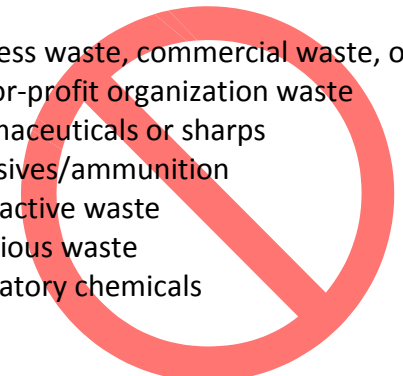
Latex paint is non-toxic and should be dried to a solid, then disposed of in regular trash. Cat litter or paint thickener (available at hardware stores) may be used to harden large amounts quickly.

Packaging and Transportation

- Keep products in original containers.
- Label materials not in original containers.
- If you are not sure of the product name, provide a description. Clearly label the container with the current date and **“UNKNOWN SUBSTANCE “ ” DANGER ”** and **“DO NOT OPEN”**
- If the product is in a rusting or breakable container, place it within a plastic container with a tight fitting lid and label the outside container.
- **Never mix products!**
- **Seal lids tightly!**

chemicals **NOT** accepted

- * Business waste, commercial waste, or profit/not-for-profit organization waste
- * Pharmaceuticals or sharps
- * Explosives/ammunition
- * Radioactive waste
- * Infectious waste
- * Laboratory chemicals



Did you know...

Automotive batteries, button batteries, and motor oil can be recycled through various local businesses.

Remember...



- **Only HOUSEHOLD chemicals are accepted.** Small businesses should contact the Missouri Department of Natural Resources Technical Assistance Program (TAP) at 800-361-4827.

THE ABOVE ITEMS ARE AVAILABLE TO THE PUBLIC FOR REUSE

Household Chemical Collection (HCC) facility is open to all Taney County Residents

Visit us at bransonmo.gov/pw/recycling



@RecycleBranson



“How to Recycle Anything in Branson”

Available on bransonmo.gov