

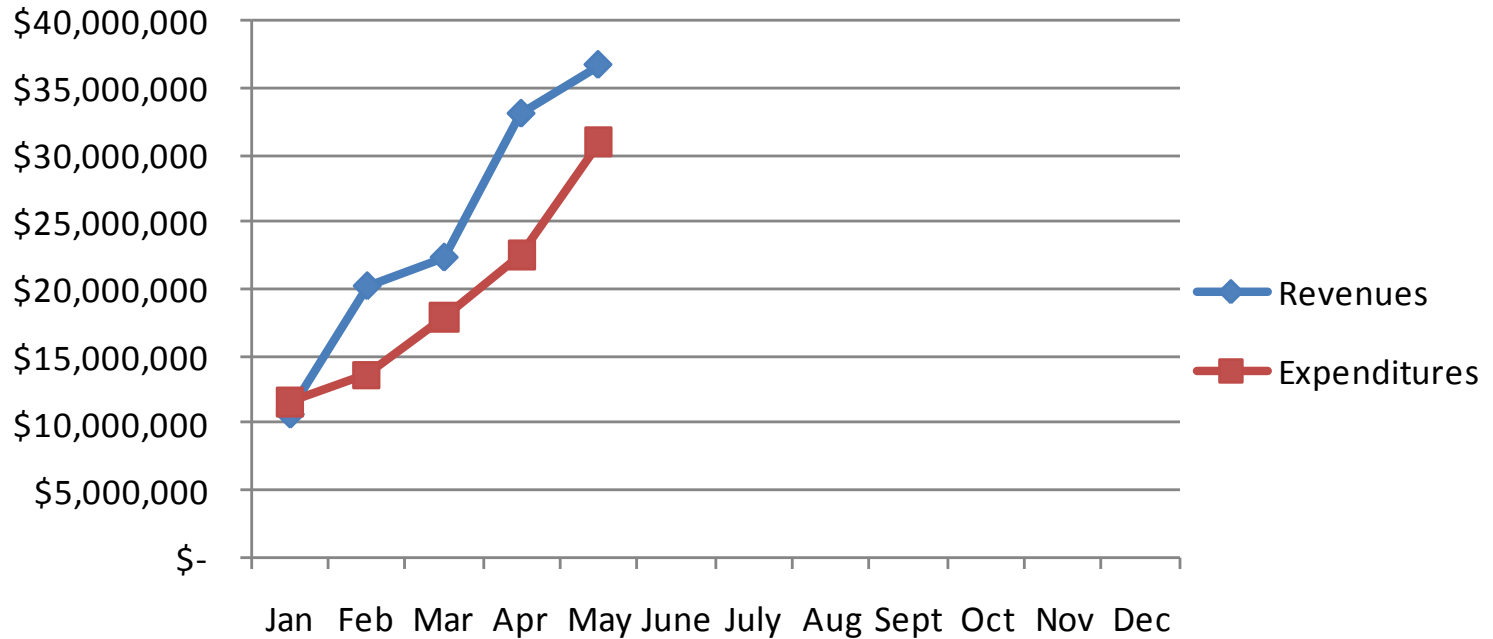


City of Branson Financial Update

May of FY2010

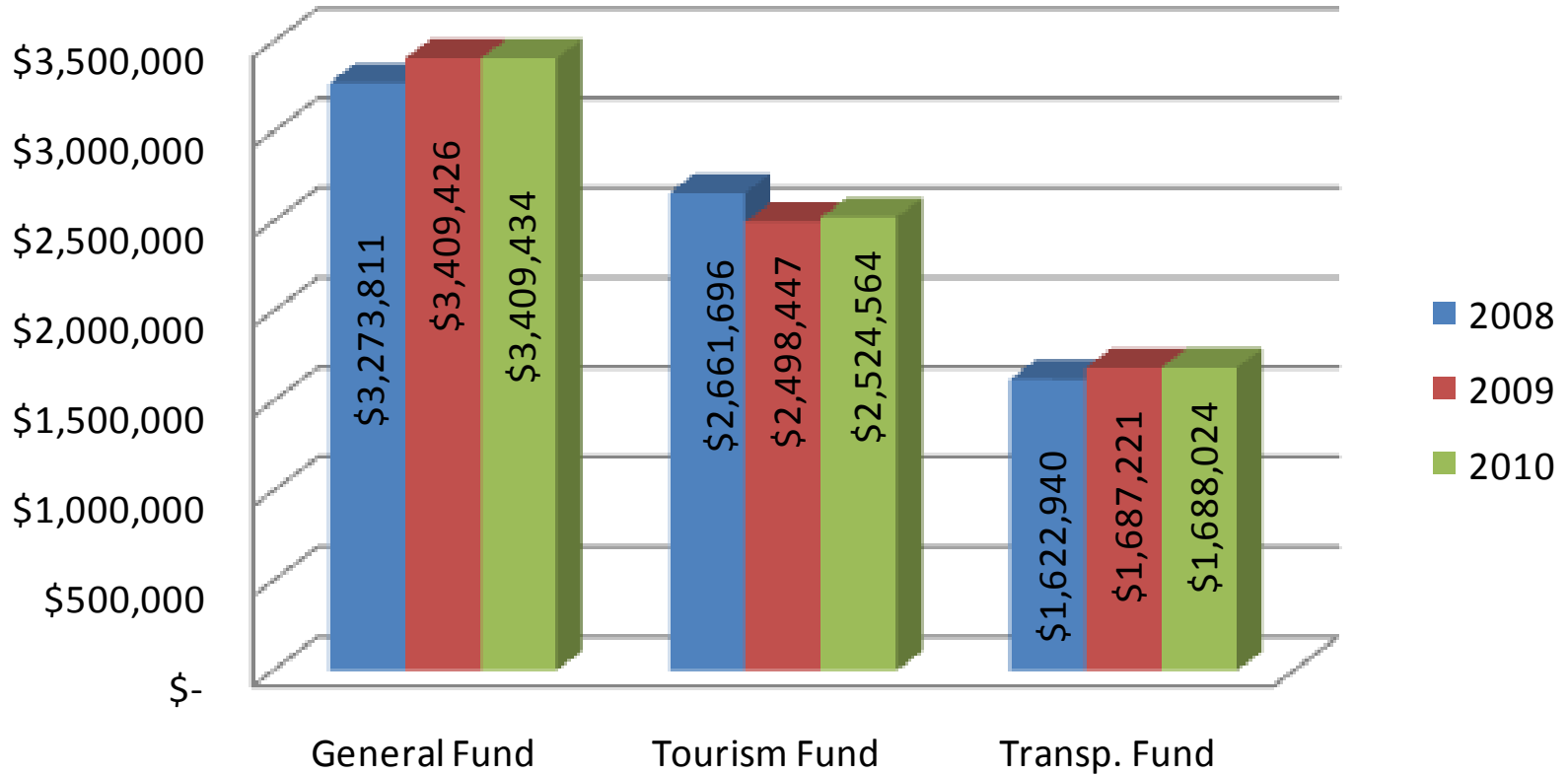
Presented by Finance Director Lori Helle

All Governmental Funds Revenues vs. Expenditures FY2010

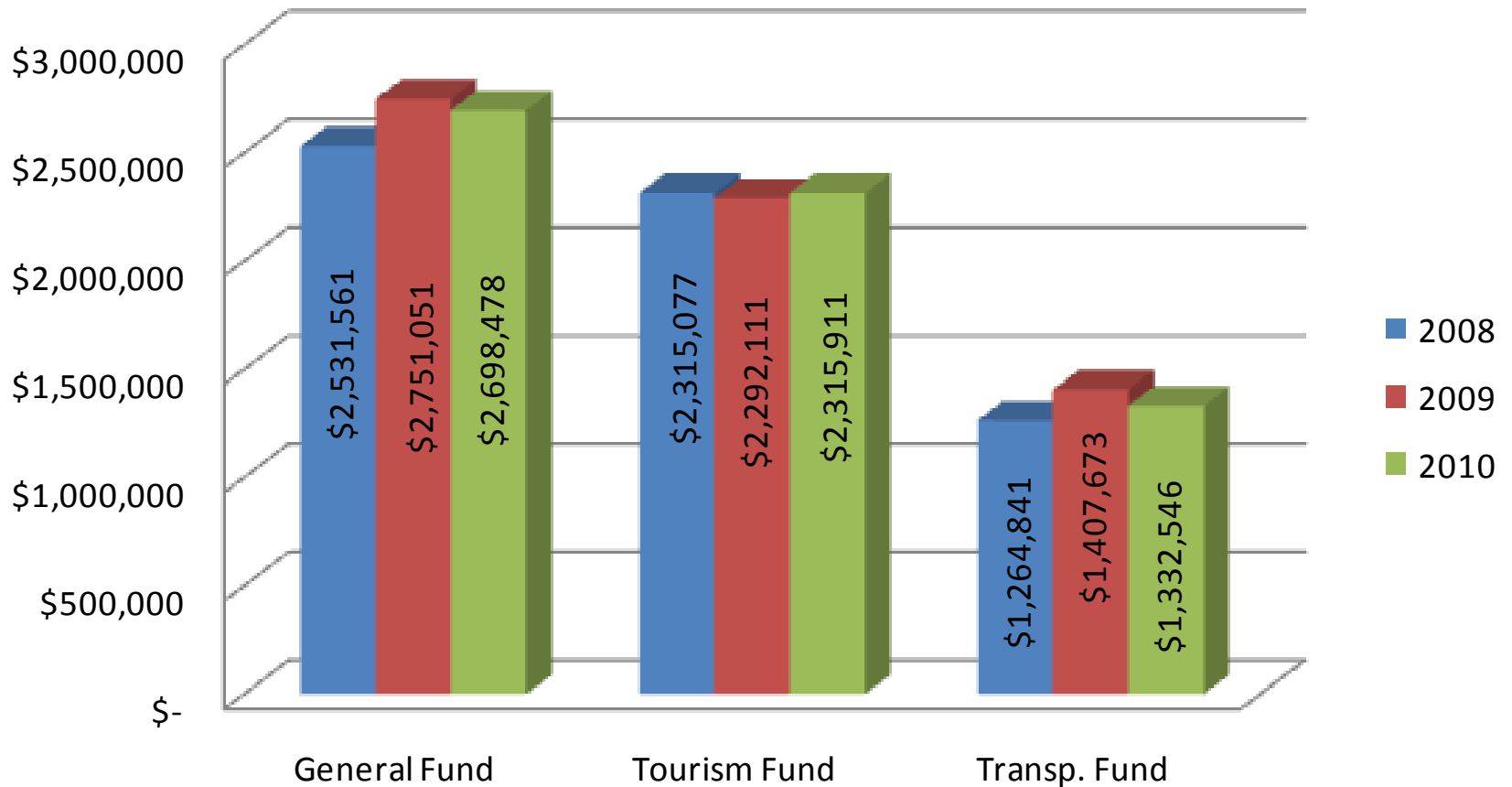


Revenues--\$36,680,288 Expenditures--\$30,963,476 (both include transfers in/out)

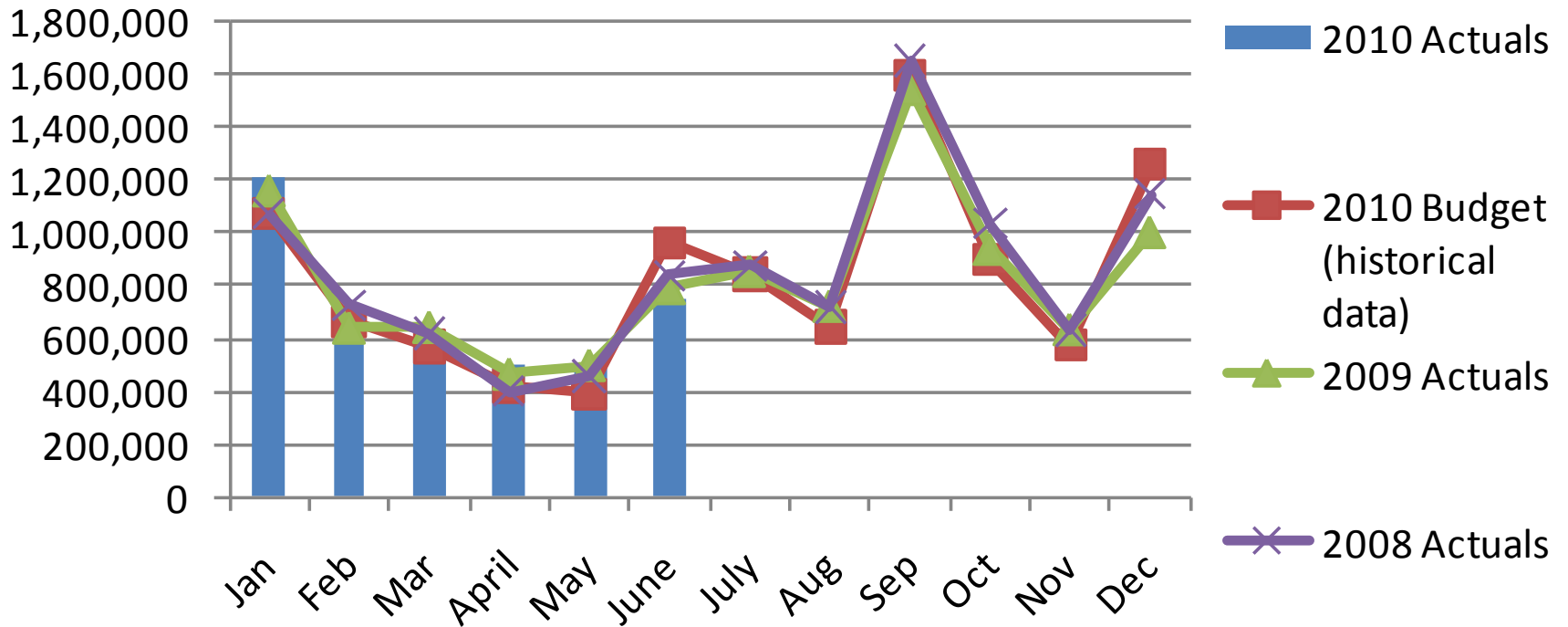
Gross Sales Tax for all Governmental Funds thru 05/31/10



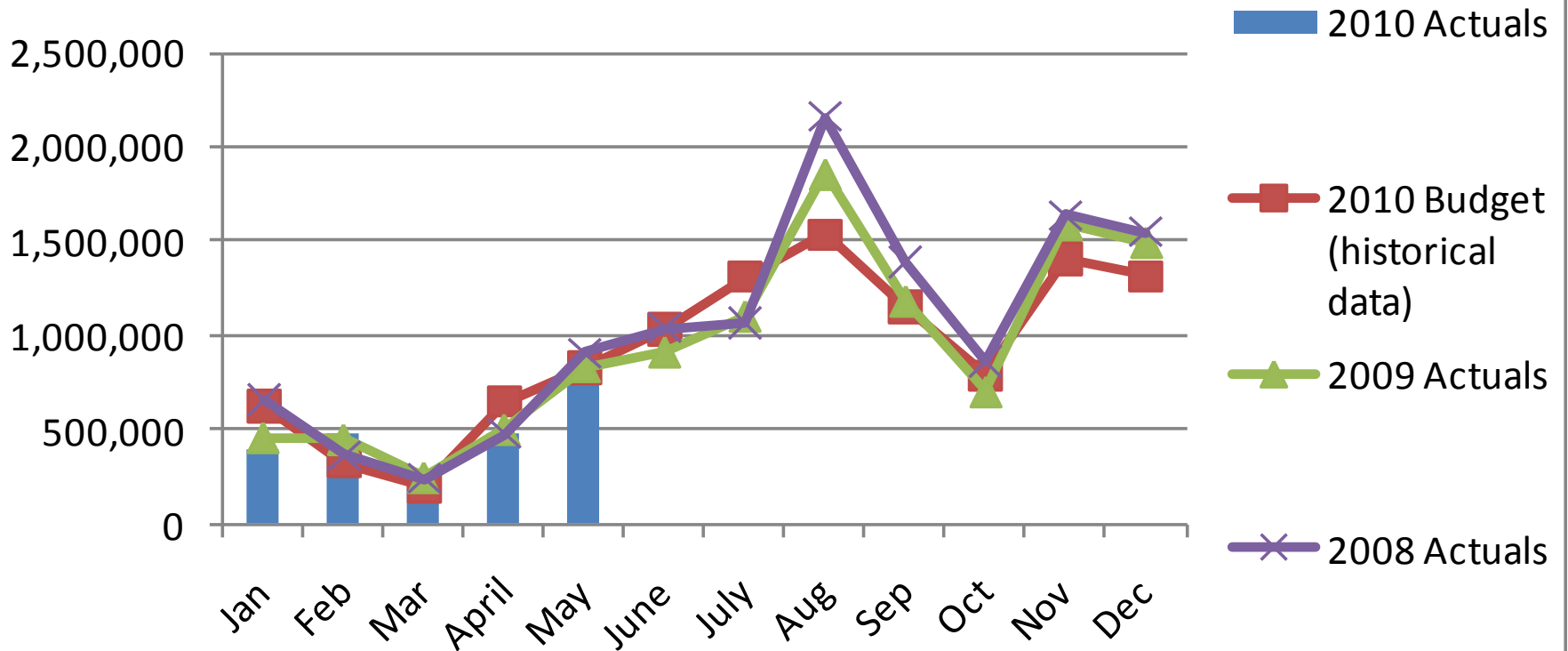
Net Sales Tax for all Governmental Funds thru 05/31/2010



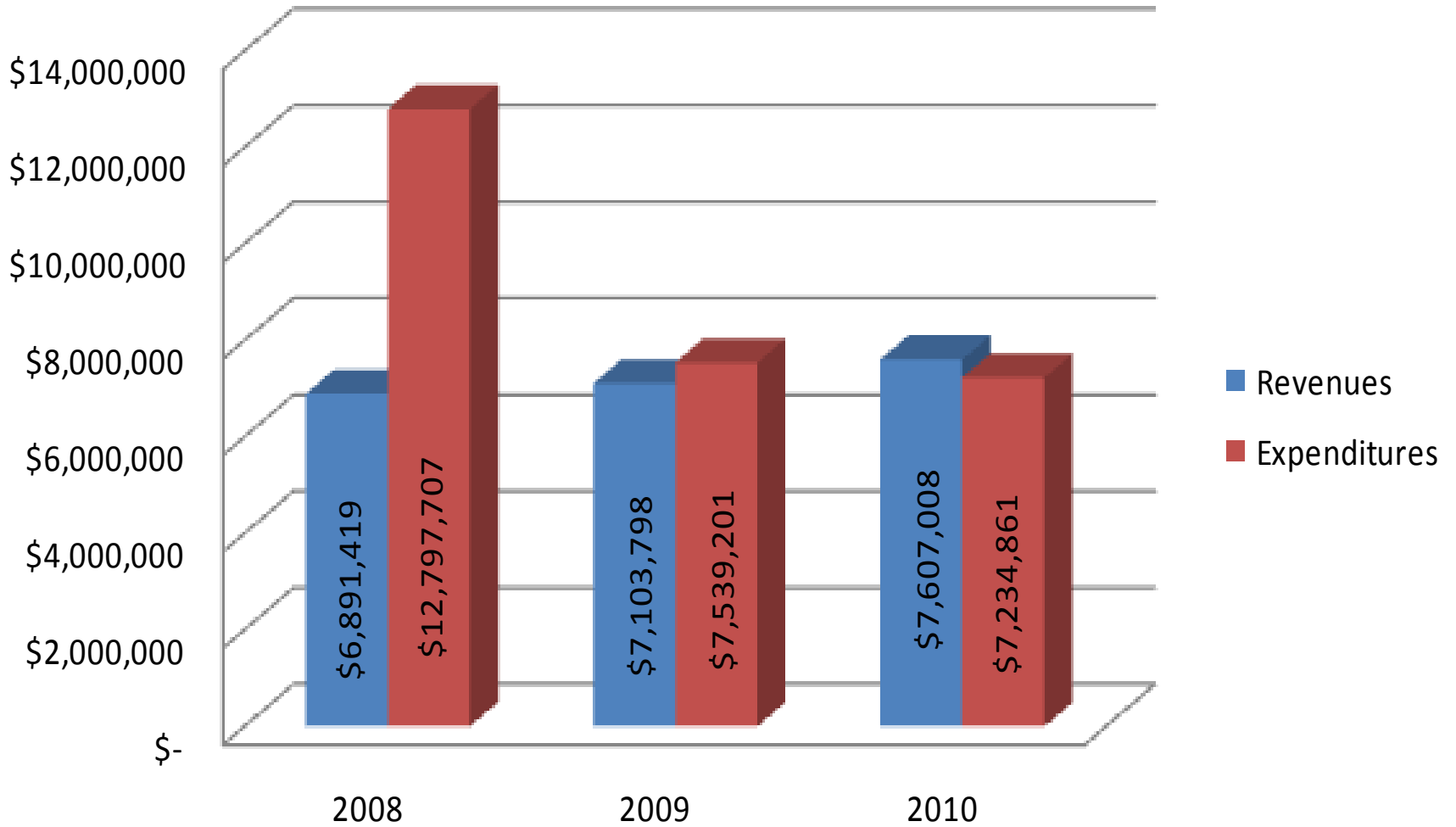
2010 Monthly 1% Sales Tax (Actual vs. Budgeted)



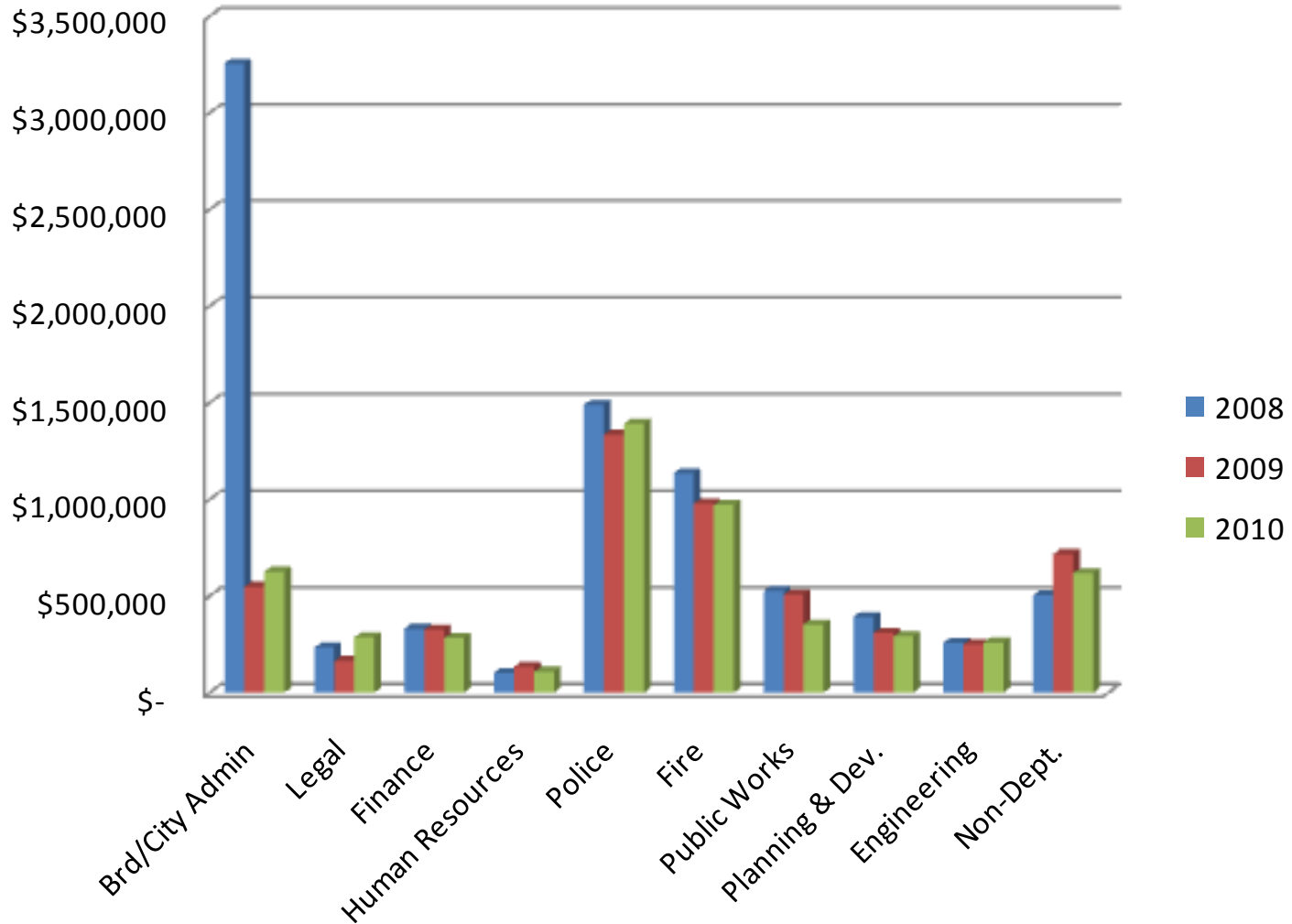
2010 Monthly Tourism Sales Tax (Actual vs. Budgeted)



General Fund--May 2010



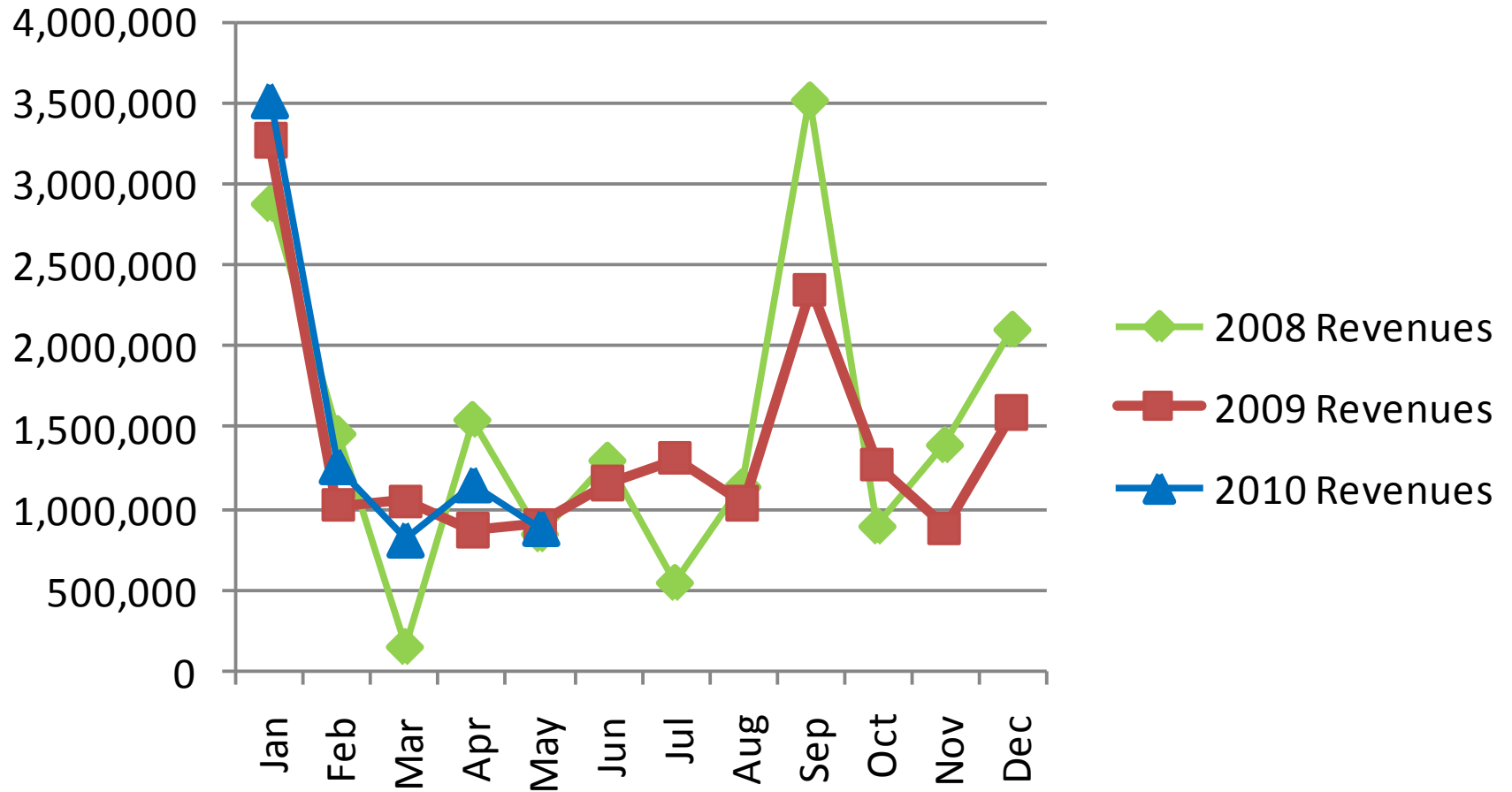
General Fund Expenditures by Dept.



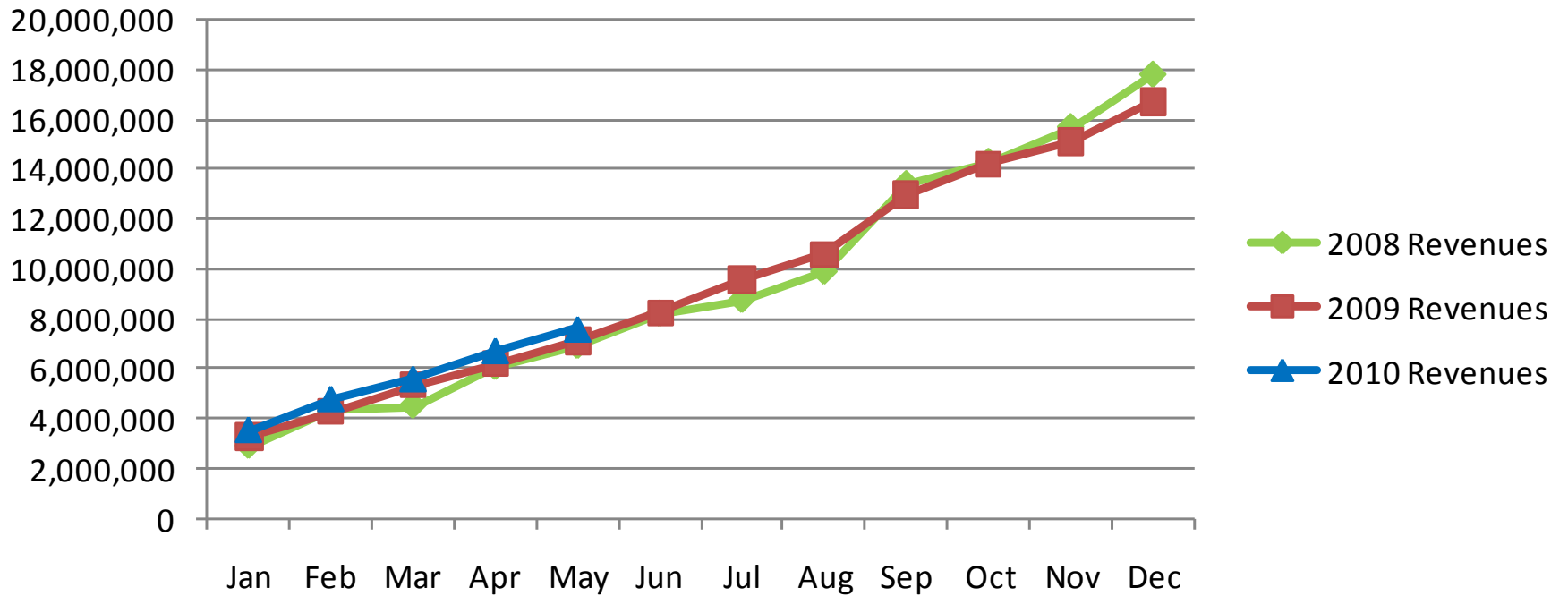
2008 - Board/City Admin – includes lump sum paid to Convention Center

2009 - Non-Dept. – includes the Health Dept. Agreement, BCC, and all city utilities

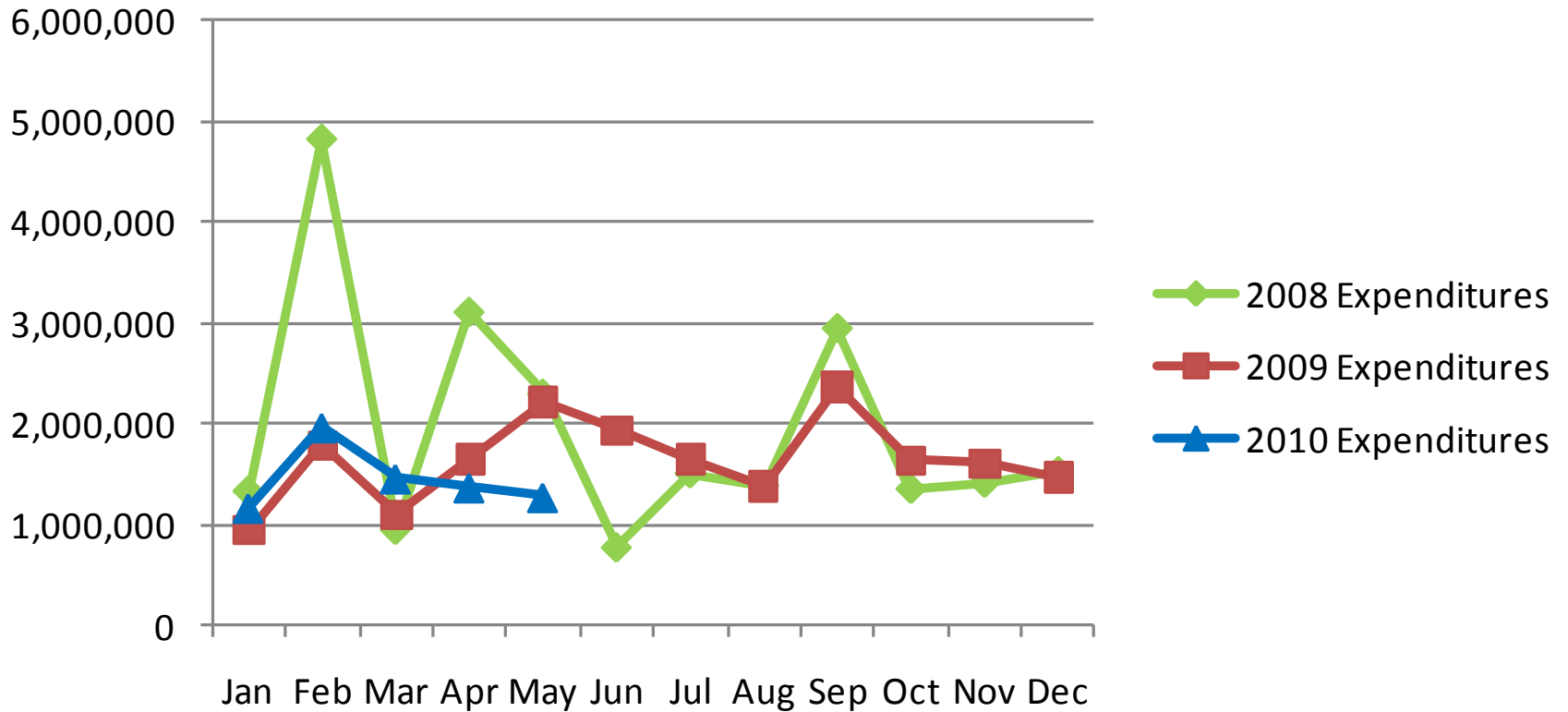
3 Year Monthly GF Revenue Trend



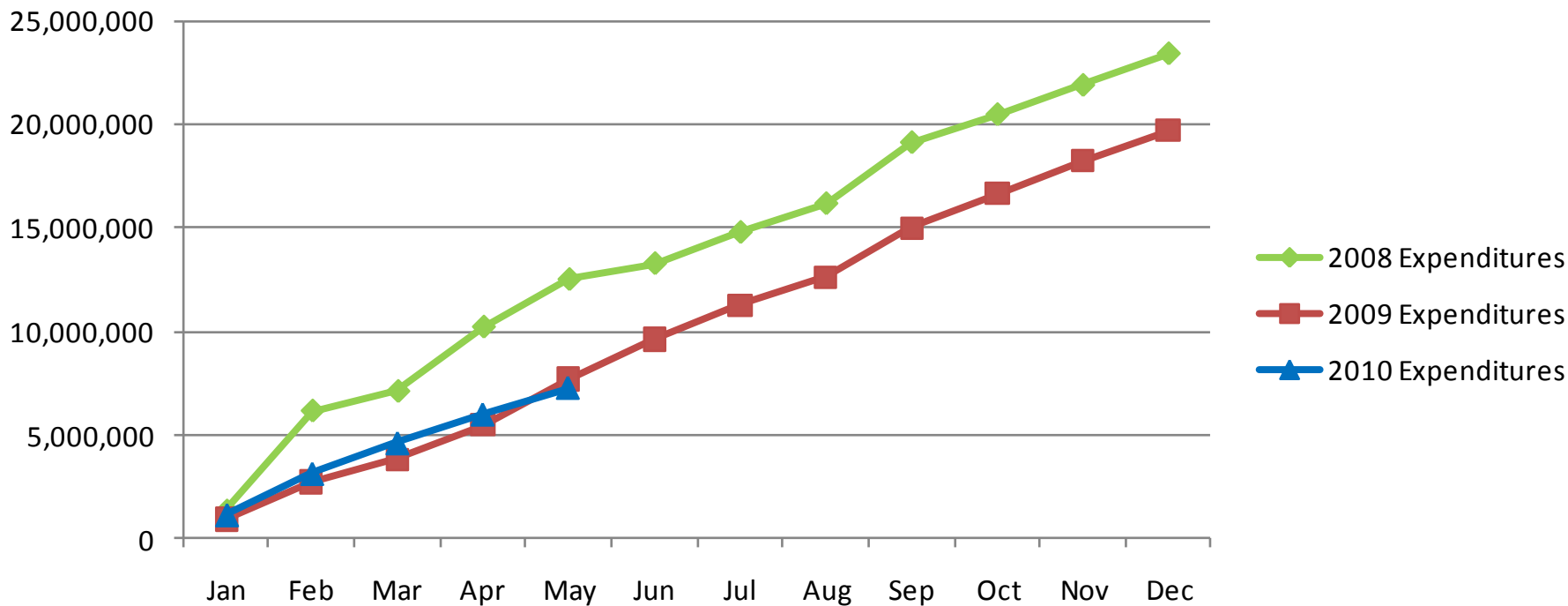
Three Year Cumulative GF Revenue Trend



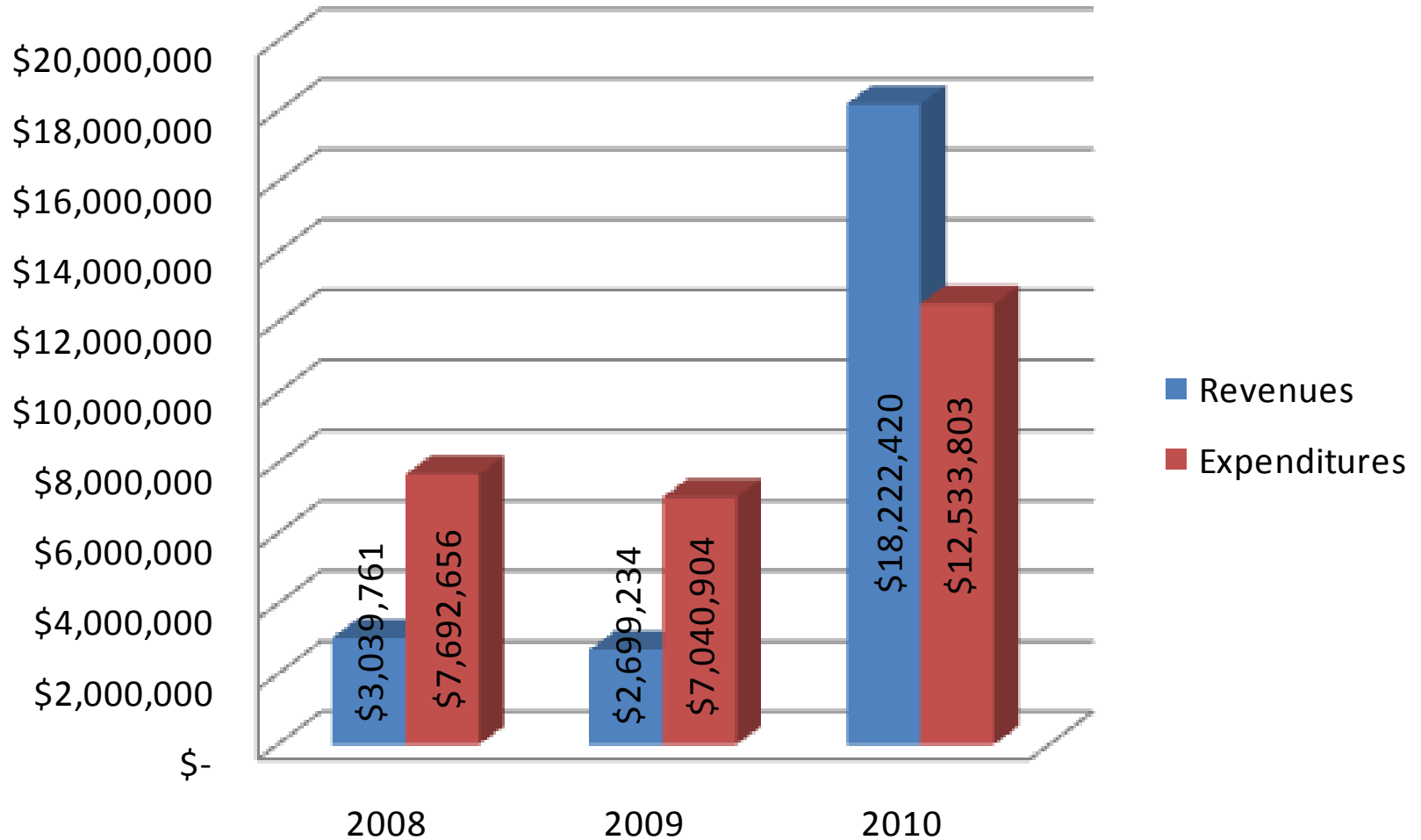
3 Year Monthly GF Expenditure Trend



Three Year Cumulative GF Expenditure Trend

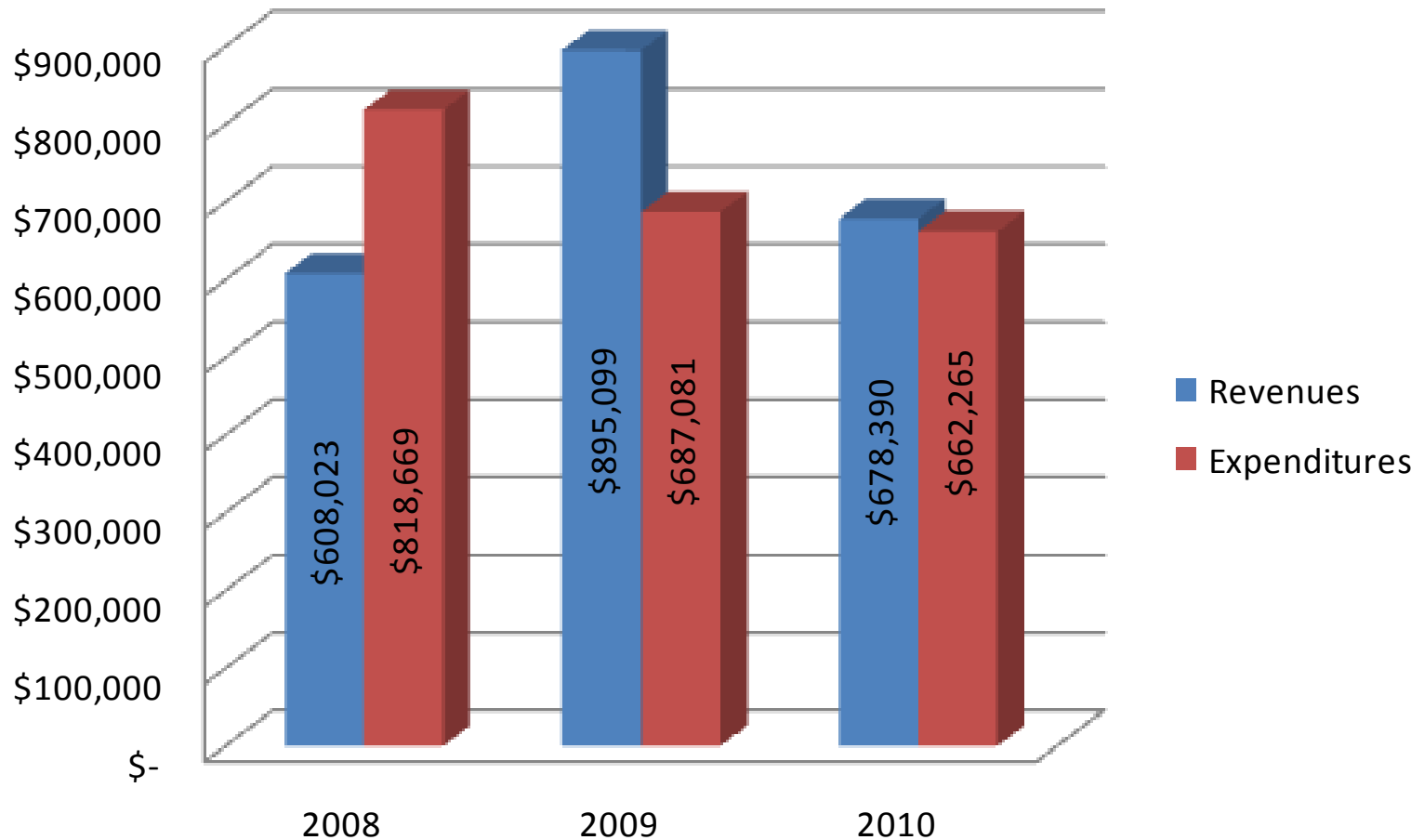


Tourism Fund--May 2010



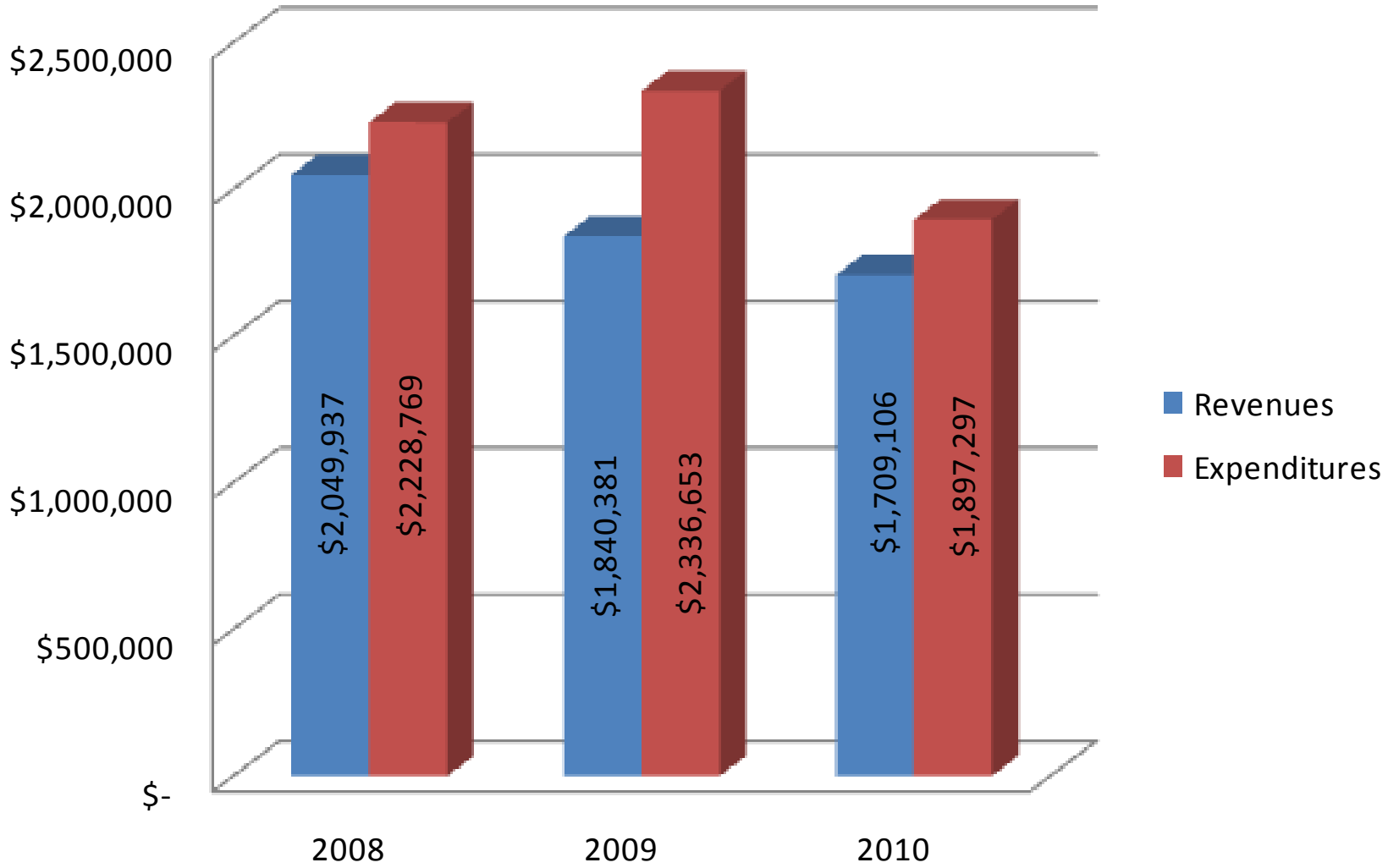
2010 includes Refinancing 2007 Issue and new 2010 issue - \$15,315,586

Park & Rec.-- May 2010



2009—the transfer from the General Fund to the Park Fund (revenues) is a lot more than the amount from previous year or the current year due to the city creating a 20% Reserve Balance per ordinance

Water & Sewer--May 2010



Questions?

